

5 PRIORITIES FOR DIABETES IN KENTUCKIANA

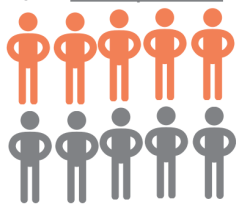


1 REDUCE INCIDENCE

of diabetes and prediabetes in Kentuckiana

1 out of 10 have diabetes **4 out of 10** have prediabetes

15-30% of people with prediabetes will develop diabetes within five years

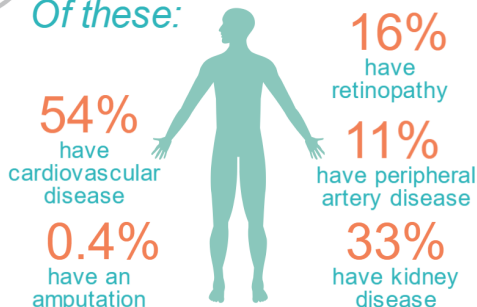


#7 CAUSE OF DEATH



48% of persons with Type 2 Diabetes had at least one complication in 2015.

Of these:



Of those with a comorbidity: **72% have at least one comorbidity, and 46% have more than two.**

- Hypertension 80%
- Hyperlipidemia 63%
- Obesity 22%
- Depression 14%

2 IMPROVE CARE

by following recommended guidelines

92% receive A1c testing

86% receive nephropathy exam

44% receive retinal eye exam



Outcomes

✓ 63% have A1c levels less than 8%

✗ 22% have A1c levels greater than 9%

Source: Kentuckiana Health Collaborative (KHC)

3 REFORM PAYMENT

to improve quality, cost, and experience

Amount high-risk people can delay or avoid developing diabetes with participation in lifestyle change programs like the National Diabetes Prevention Program **58%**



2% Proportion of persons with diabetes who took a diabetes self-management education (DSME) class in 2014

14 clinicians participate in NCQA's Diabetes Recognition Program (DRP)

3 accountable care organizations (ACOs) participate in the Medicare Shared Savings Program



Sources: Centers for Disease Control; Institute for Alternative Figures; Kentucky Cabinet for Health and Human Services; Managed Care Digest Series®, © sanofi-aventis U.S., LLC A SANOFI COMPANY. Data Source: IMS Health © 2015

Sources: Kentucky Cabinet for Health and Human Services, National Committee for Quality Assurance (NCQA), Centers for Disease Control

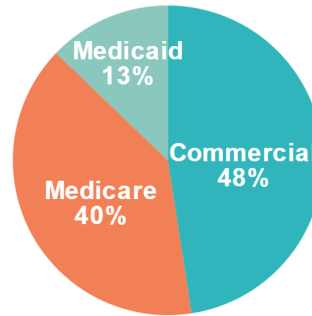
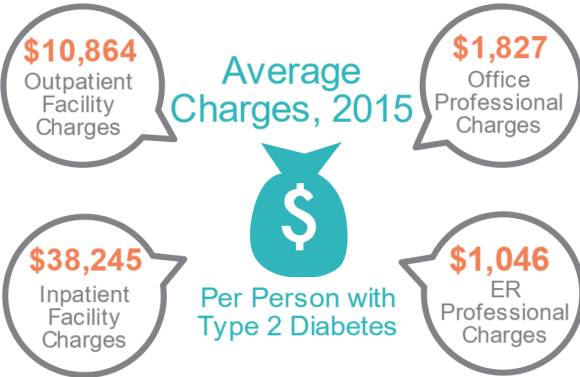
4 CREATE AFFORDABLE, SHOPPABLE SOLUTIONS

for healthcare for individuals with diabetes to help manage costs and improve outcomes

Healthcare spend is 3.6x higher for people with diabetes



Kentucky and Indiana receive an "F" in healthcare price transparency



85% of Kentuckiana residents are insured. The majority of Persons with Type 2 Diabetes with coverage have commercial or Medicare.

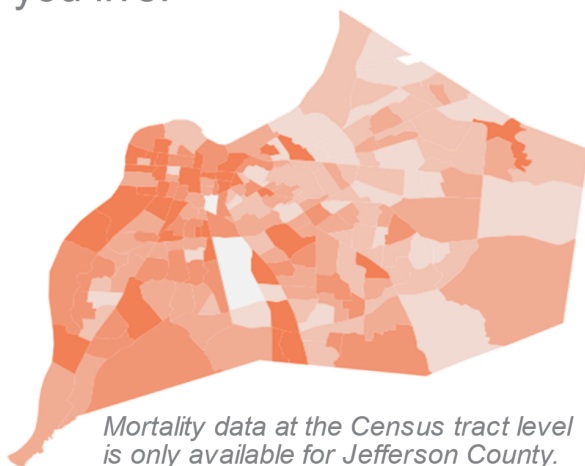
\$1,621 cost of diabetes to small/medium employers in absenteeism each year, per 100 employees

Sources: Centers for Disease Control; U.S. Census Bureau; Bureau of Labor Statistics; Health Care Incentives Improvement Institute; Managed Care Digest Series®, © sanofi-aventis U.S., LLC A SANOFI COMPANY. Data Source: IMS Health © 2016

5 ADDRESS SOCIAL DETERMINANTS OF HEALTH

by providing resources and support to those in need

Diabetes mortality rates vary widely depending on where you live.



- 18%** of high school students fail to graduate in four years
- 474** violent crimes per 100,000 population
- 9.9** social membership associations per 10,000 people
- 15%** of households with a severe housing problem such as overcrowding, high housing costs, or lack of kitchen/plumbing facilities
- 16%** of people don't have access to a reliable source of food

Sources: Louisville Metro Department of Public Health and Wellness; Robert Wood Johnson Foundation's County Health Rankings



Building a Bridge to Better Health, Better Care and Better Value